

WILD ABOUT TRAVEL - INDIA



Ref: BT2

Indian Wildlife Special and Taj Tour

Best time to visit: November – March

15 days Delhi – Bharatpur – Chambal – Agra – Kanha – Delhi
(Similar to BT1 but with overnight train back to Delhi replacing internal flight)
Feel the adrenalin rush on jeep safari at the sound of Chital alarm-calling in Kanha National Park. A Tiger sighting is likely here along with Bison and Swamp Deer. Wild Dog, Leopard and Sloth Bear are occasionally seen too. Explore the famous Bharatpur Bird Sanctuary, enjoy the Chambal river boat safari experience and see the incredible Taj Mahal.

Bird species likely to be seen: Indian Grey Hornbill, Sarus Crane, Painted Stork, Black-necked Stork, Dusky Eagle-owl, Indian Courser, Greater Painted-snipe, Indian (Collared) Scops Owl, Spotted Owlet, Red Junglefowl, Kalij Pheasant, Bar-headed Goose, Yellow and Red-wattled Lapwings, Plum-headed Parakeet, Orange-headed Thrush, Grey and Large-tailed Nightjars, Bronze-winged Jacana.

Mammals likely to be seen: Bengal Tiger, Indian Bison (Gaur), Swamp Deer, Nilgai, Sambar Deer, Spotted Deer, Wild Boar, Jungle Cat, Hanuman (Common) Langur, Rhesus Macaque. Leopard, Wild Dog (Dhole) and Sloth Bear are present at Kanha but require a little more luck to see them.



Bengal Tiger at Kanha © P Telfer



White-breasted Kingfisher
© C Bradshaw

Itinerary

Day 1: Flight (excluded, but easily booked via the internet)

Day 2: Delhi

Meals: Payable directly on this day

You will be welcomed at Delhi airport and taken to check in at local hotel (check in is from 12 noon). Spend the remainder of the day exploring Delhi sites with your driver.

Day 3: Delhi – Bharatpur

Meals: Breakfast in Delhi, lunch and dinner at Bharatpur

After breakfast your driver will take you to Bharatpur. The journey can take anywhere between 5 and 7 hours, depending on traffic. We recommend leaving no later than 7am, earlier if you can, to avoid the worst of the rush hour. Check in to your hotel, just a few hundred meters from the entrance to Bharatpur Bird Sanctuary, and spend the remainder of the day exploring the sanctuary with an experienced guide. It is worth checking adjacent fields where it is sometimes possible to see Indian Courser and Yellow-wattled Lapwing. Relax for the evening at your hotel.

Day 4: Bharatpur

Meals: Breakfast, packed lunch (served inside the park) and dinner

Explore Bharatpur Bird Sanctuary for the whole day with an experienced guide. Bharatpur is an incredible place for wetland birds when water is plentiful. Even in drought years (there have been several recently) you can see a large number of species in a day in grassland, dry thorn, forest and wet areas. Black-necked, Painted, Woolly-necked and Open-billed Storks, Black Bittern, Siberian Rubythroat, Spotted Owlet, Collared Scops Owl, Golden Oriole, Red Avadavat, Golden Jackal and Nilgai are just a few of the many species you can see with the help of your guide. Relax for the evening at your hotel.

Day 5: Bharatpur - Chambal

Meals: Breakfast and packed lunch from Bharatpur, dinner at Chambal

Birdwatch for a final morning inside Bharatpur Bird Sanctuary with your guide, then your driver will take you to Chambal (approx. 3 ½ hours). Journey through typical Uttar Pradesh countryside and see local people at work in the fields and rural businesses including brick furnaces. Arrive at your safari lodge and check in to your cottage. In the grounds you can often see Fruit Bats, Indian Palm Civet and Brown Hawk Owl. Relax for the remainder of the day at your lodge.

Day 6: Chambal

Meals: Breakfast, lunch and dinner

In the morning enjoy a boat trip with the resident guide along the River Chambal to



Indian Skimmer © C Bradshaw



Gharial, Chambal © C Bradshaw



Taj Mahal © K Barnes

explore the National Chambal Sanctuary. Species here include Indian Skimmer, Gharial (an uncommon fish-eating crocodile), Marsh Crocodile, many species of bird and, if you are lucky, you might glimpse the rare Ganges Fresh Water River Dolphin. In the afternoon explore the grounds and local arable areas with the resident bird guide. Relax at your safari lodge for a second night.

Day 7: Chambal – Agra – overnight train to Jabalpur

Meals: Breakfast and packed lunch from Chambal

Spend the early part of the morning birdwatching around Chambal with the resident guide. Leave mid morning for Agra (approx. 2 hour drive) taking a packed lunch. Visit the Taj Mahal with a guide and, if time permits, you could also visit Agra Fort (entrance on direct payment). **The Taj Mahal is closed on Fridays.** Allow time for dinner (payable directly) before being transferred to the railway station to catch the Gondwana Express train departing Agra at 1850 hours. Night in first class air-conditioned sleeper (pillow, sheet and blanket provided).

Day 8: Jabalpur - Kanha

Meals: Breakfast at Hotel Jackson, lunch and dinner at your lodge

Your train will arrive early in the morning at Jabalpur around 0715 hours, but it can run late. The good news is that it is the end of the line for this train, so you'll have plenty of time to disembark. Here you will be met on the platform by your driver (look for your name on a placard). You'll be taken to Hotel Jackson in Jabalpur for breakfast before starting the scenic drive to Kanha. The journey should take around 3 ½ - 4 hours. Check in at your safari lodge is usually from 12 noon, earlier if rooms are available but if not, you can relax in the communal areas of the lodge. Spend a few hours at leisure, then later in the afternoon the resident lodge naturalist will take you birdwatching (on foot) around the lodge environs.

Alternatively, we could book an additional safari drive – see supplement. **Note:**

Kanha National Park is closed on Wednesday afternoons.

Days 9, 10 and 11: Kanha

Meals: Breakfast, lunch and dinner at your lodge

Enjoy morning and afternoon jeep safaris inside Kanha National Park (Kisli zone). As well as Tiger, Kanha is an excellent place to look for Gaur, Swamp Deer and Wild Dog. Sloth Bear and Leopard are also seen occasionally. As with all wildlife destinations you should see plenty of stunning birdlife too. If a Tiger is found away from the jeep track, but accessible by elephant, you may be offered the opportunity to transfer onto an elephant and head off to see the Tiger. This is dependent on successful tiger tracking and as it cannot be guaranteed the cost is payable directly (approx. £10 per person per short ride), though whether you decide to do this or not is your choice. This will be the case on most morning safaris. On arrival back at the lodge you will have a few hours in the middle of the day to relax and have lunch before setting off on your afternoon jeep safari. Nights at your safari lodge.

Day 12: Kanha

Meals: Breakfast, lunch and dinner at your lodge

Enjoy a leisurely morning, or you could choose to include an extra jeep safari inside the National Park – see supplement. After lunch and a siesta explore the area around your lodge (on foot) with the lodge naturalist guide for birds and other wildlife. Night at your safari lodge.

Day 13: Kanha – Jabalpur – overnight train to Delhi

Meals: Breakfast and packed lunch from your lodge.

Have a more leisurely morning for packing. Then with a packed lunch for the journey you'll be transferred to Jabalpur in plenty of time to connect with the Gondwana Express train departing at 1555 hours to Delhi. Night on the train in first class air conditioned sleeper (pillow, sheet and blanket provided).

Day 14: Delhi

Meals: All meals payable directly today

Your train will arrive in Delhi at 0725 hrs. Your driver will meet you at the station platform (scan the placards for your name). You will have the car and driver at your disposal for the remainder of the day for local sightseeing in Delhi (monument fees and any guide fees to be paid directly). Check in at your hotel will be after 12 noon. Night at your hotel.

Day 15: Delhi

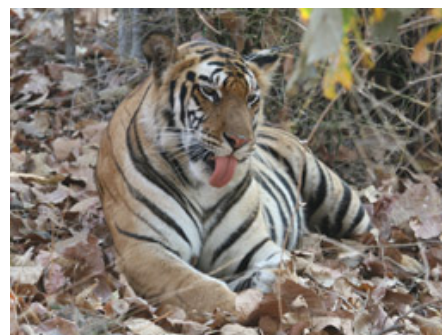
Meals: Breakfast

On this day we have included a departure transfer to the airport to connect with your international flight home (to be booked by you directly).

Tour ends.



Indian Palm Civet © R F Porter



Bengal Tiger at Kanha © P Telfer



Common Langur © K Barnes



Nilgai © R F Porter



Indian Roller © K Bradshaw

Price per person on twin-share basis for TWO travelling (with exclusive jeep safaris): £1535 for STANDARD accommodation, £1645 for DELUXE accommodation. See supplement if you would prefer an exclusive jeep.

Price per person on twin-share basis for THREE travelling (with exclusive jeep safaris): £1360* for STANDARD accommodation, £1490* for DELUXE accommodation

Price per person on twin-share basis for FOUR travelling (with exclusive jeep safaris): £1295 for STANDARD accommodation, £1425 for DELUXE accommodation

Single Room supplement: Standard £335, Deluxe £480.

* Single room supplement to be applied for extra room.

Supplement for each extra safari in an exclusive jeep in Kanha Kisli zone: £95 per jeep (divided by number in jeep)

Supplements may apply for the Christmas/New Year period (20th December – 5th January). Please enquire for details.

Prices valid till 31 March 2012.

For budget categories of accommodation see separate itinerary. Luxury options are also available on request.

Please note that the booking of this itinerary is with Wild About Travel and their booking terms and conditions apply.

Place	Standard	Deluxe
Delhi	Justa The Residence, Gurgaon, Superior Room, Bed and Breakfast	Justa The Residence, Gurgaon, Superior Room, Bed and Breakfast
Bharatpur	Hotel Sunbird, Deluxe Room/Cottage, Full Board	Laxmi Vilas Palace, standard Room, Full Board
Chambal	Chambal Safari Lodge, Standard Room, Full Board	Chambal Safari Lodge, Standard Room, Full Board
Kanha	Tuli Tiger Resort, AC Cottage, Full Board	Earth Lodge, AC Cottage, Full Board
Delhi	Justa Panchsheel, Luxury Room, Bed and Breakfast	Justa Panchsheel, Luxury Room, Bed and Breakfast

Price includes:

Accommodation in the above mentioned hotels as per category
Meals as per itinerary, inc. breakfast at Hotel Jackson in Jabalpur on Day 8
Air-conditioned vehicle for all transfers mentioned in the above itinerary
1 full day and 2 half days birdwatching at Bharatpur Bird Sanctuary (inc. entrance and cycle rickshaw pick up and drop once each day but excluding camera fee) with experienced bird guide.
1 Boat safari on the Chambal River with entrance fee and local bird guide and 2 x ½ day birdwatching around Chambal Safari Lodge with lodge bird guide.
6 exclusive jeep safaris inside Kanha National Park (Kisli Zone) with accompanying lodge naturalist, national park guide and entrance fee.
Explore with resident naturalist (on foot) around Kanha lodge on Day 8 afternoon and Day 12 afternoon
1st class air-conditioned overnight express train from Agra to Jabalpur and Jabalpur to Delhi
All currently applicable taxes
Bird/mammal checklist and pre-travel information

Price excludes:

Flights and any airport tax (if extra)
Tourist visa and travel insurance
Camera and camcorder fee where this is not included in park/monument entrance fee.
A few meals where these are not specified above
Taj Mahal entrance fee – allow approx. £10 per person
Agra Fort entrance fee – allow approx. £5 per person
Elephant ride at Kanha – allow £10 pp. per ride
Any expenses of a personal nature such as hard/soft drinks, laundry, phone/fax calls, tips etc.
Any item not mentioned above
Any additional taxes levied by the Government of India on the tourism sector in future or increase in park entrance fees

Cost incidental to any change in the itinerary or stay on account of flight cancellation due to bad weather, ill health, roadblocks and/or any other factors beyond our control.

How to book

The booking of this itinerary is with Wild About Travel Limited and their booking terms and conditions apply. Please contact Jo Thomas at Wild About Travel (jo@wildabouttravel.co.uk) / 01480-370593 to register your interest.

To confirm your booking please complete the booking form and send a 25% deposit by £ sterling cheque payable to Wild About Travel via the Wild About Travel Office, 25 Sapley Road, Hartford, Huntingdon, Cambs PE29 1YG.

Remaining balance to reach Wild About Travel at least 40 days before tour commencement by £ sterling cheque made payable to Wild About Travel.

For any help or advice please call or email Wild About Travel and we would be happy to assist.

Tel: +44 (0)1480 370593 Mobile: +44 (0)7817 574235

Email: jo@wildabouttravel.co.uk Visit: www.wildabouttravel.co.uk

Wild About Travel Limited is a company registered in England and Wales.

Reg. no. 5522066. Registered Office: 25 Saplev Road. Hartford. Huntingdon. Cambridgeshire. PE29 1YG. UK